

SSO200-10

INRUSH CURRENT SUPPRESSOR

INSTRUCTION MANUAL

KIKUSUI ELECTRONICS CORPORATION

TABLE OF CONTENTS

	PAGE
1. GENERAL	1
1-1 GENERAL INFORMATION	1
1-2 SPECIFICATION	1
1-3 OUTLINE DRAWING	3
2. OPERATION	4
2-1 MOUNTING INSTRUCTIONS	4
2-2 CAUTIONALY NOTES	5

1. GENERAL

1-1 GENERAL INFORMATION

Model SSO200-10 is an inrush current suppressor for Kikusui PAD-L and PAE series power supplies. It suppressor inrush currents less than 60A.

1-2 SPECIFICATION

Input Voltage	: AC 200 V \pm 10%, 50/60 Hz
Maximum Constant Input Current	: AC 10 A
Suppressed Current	: See Table 1.
Ambient Temperature Range	: 0 - 40 °C (32 - 104 °F)
Isolation Resistance	: DC 500 V, 20 M Ω or more (Between chassis and input/output terminals)
Dimensions	: 47.5W x 141.5H x 80D mm (1.87W x 5.57H x 3.15D in.)
Weight	: Approximately 470 g (1 lb)
Input Power Requirement	: AC 12.6 V \pm 10%, 50/60 Hz
Power Consumption	: Approximately 0.4 VA
Suitable Model for PAD-L Series	: See Table 1.
Protection Circuit	: 15 A Fuse, Temp Fuse (91 °C(196 °F))
Accessories	: 15 A Fuse x 1, M4-23L Spacer x 2

SUITABLE MODEL	SUPPRESSED CURRENT
PAD16-30L PAD55-10L PAD70-8L PAD110-5L PAD160-3.5L PAD250-2.5L	60 A
PAD35-10L	50 A
PAE 35-10 PAE 35-20	60 A

Table 1

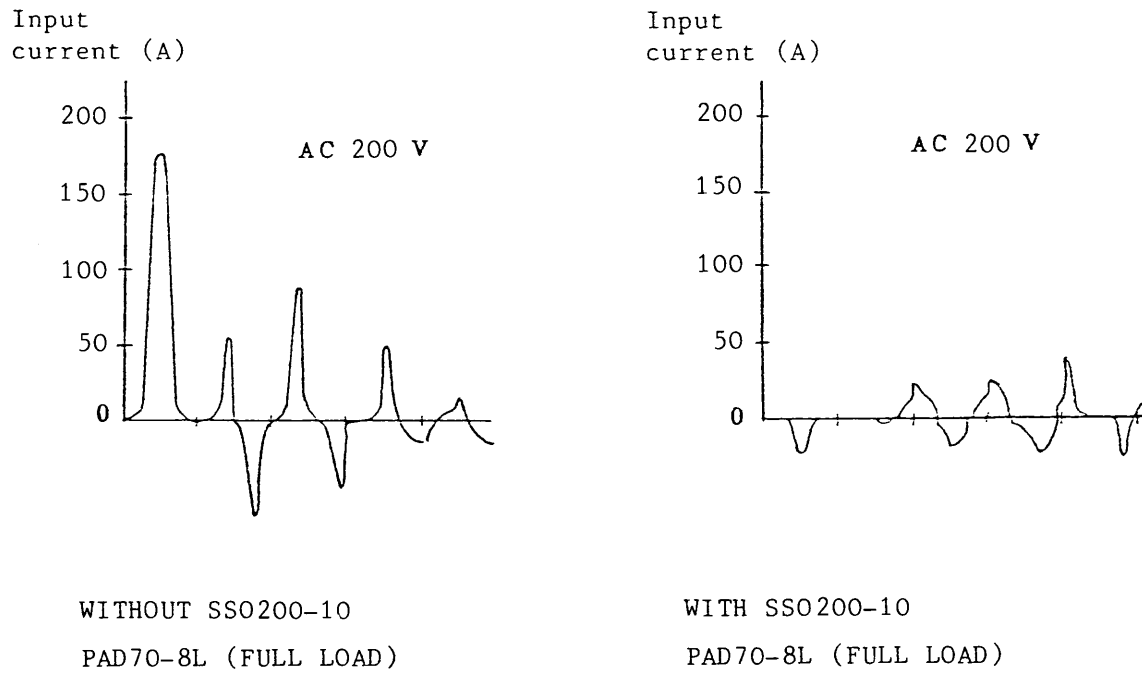
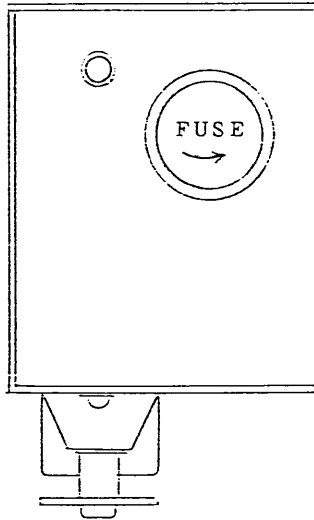
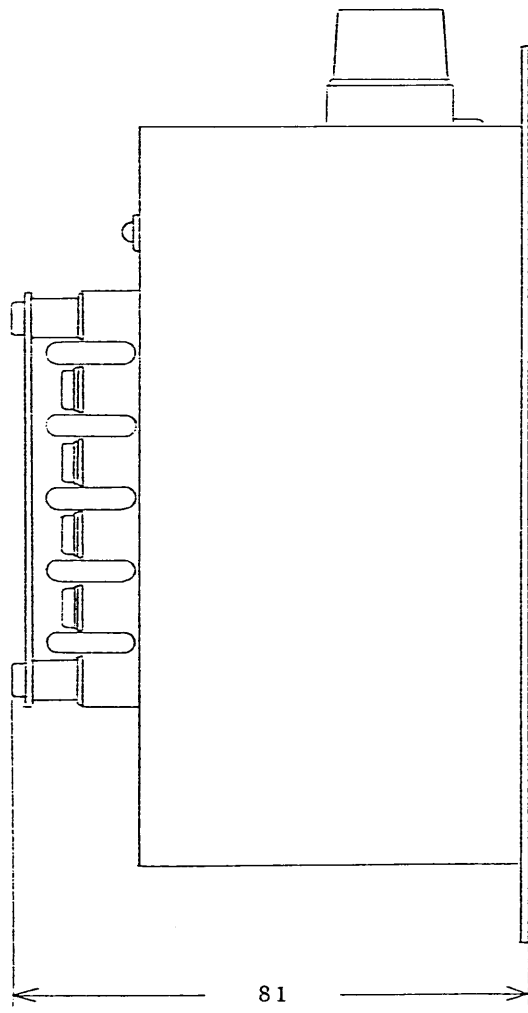
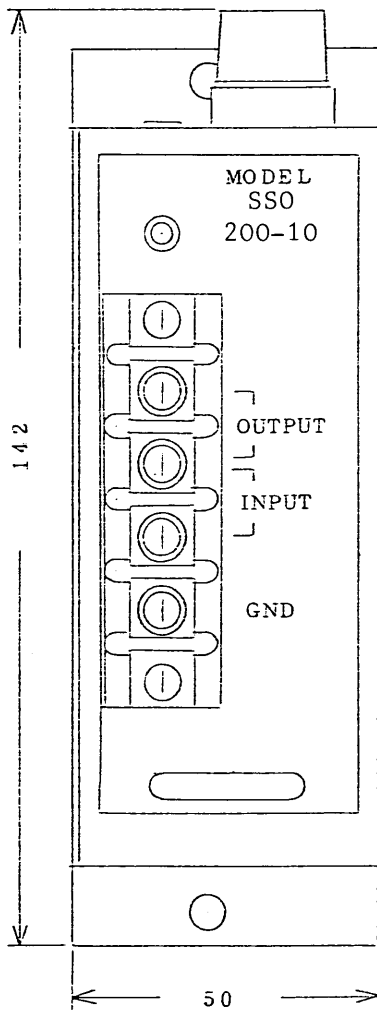


Figure 1

1-3 OUTLINE DRAWING



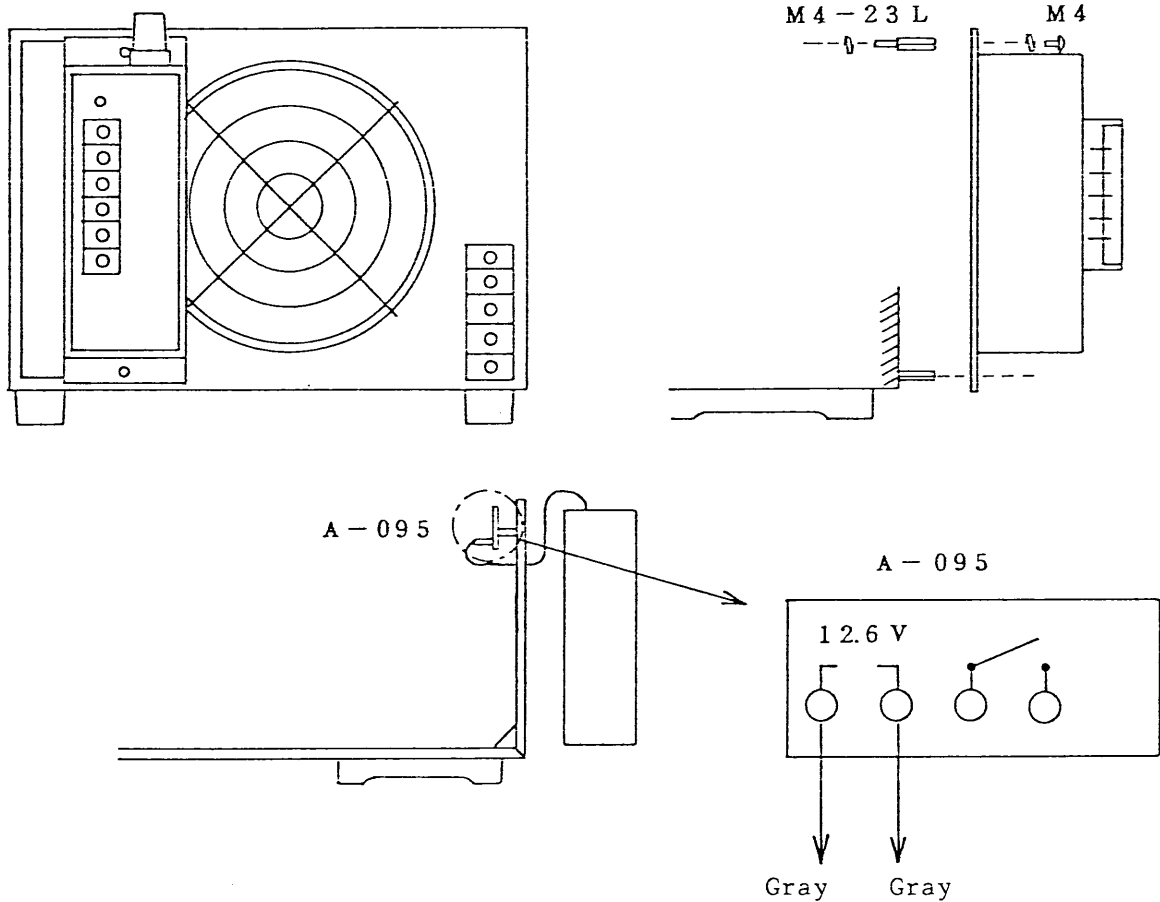
Unit: mm



2. OPERATION

2-1 MOUNTING INSTRUCTIONS (FOR PAD-L SERIES TYPE I₂, I₃)

Accessoly M4-23L Spacer x 2 is required.



* Make sure to turn-off the power switch and disconnect the AC cable from the AC outlet.

1. Install the M4-23L Spacer x 2 and the SS0200-10 to the back panel of the power supply.
2. Take the cover of the power supply off.
3. Connect and solder the gray cables from the SS0200-10 to the 12.6 V line of the printed circuit board A-095.
4. Tie the input of the power supply and the output of the SS0200-10 together.

2-2 CAUTIONARY NOTES

Check the solder point joining the 12.6 V line of board A-095 and the gray cables from SS0200-10. If they are disconnected the inside temperature will increase and the power indicator (LED) will be off. The SS0200-10 will be protected by a temperature fuse.

Figure 3 shows the allowable characteristics for the turn-on and turn-off switch of the power supply. If the power switch is switched from on to off frequency, use a remote control function for a constant current of the power supply. (See Figure 4.)

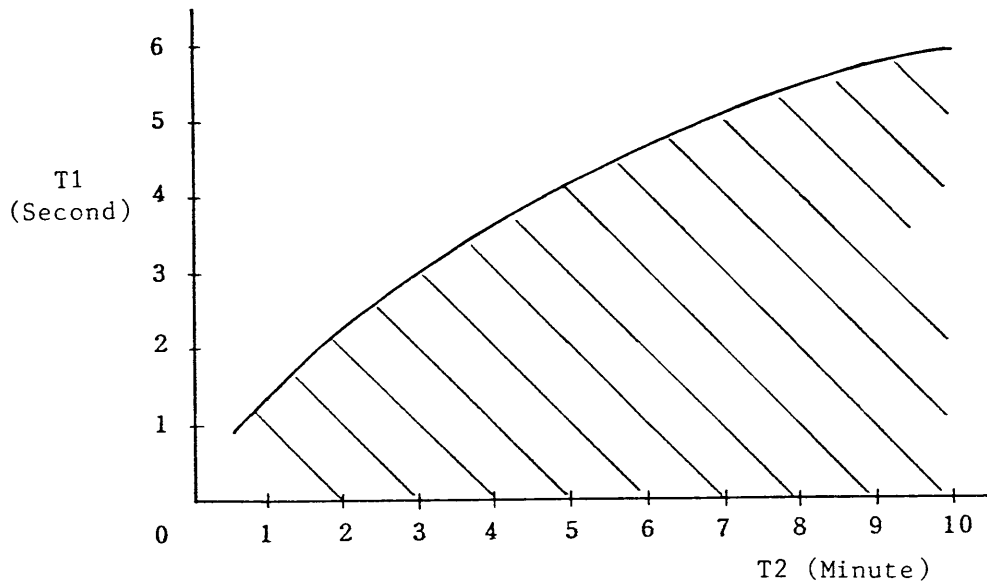
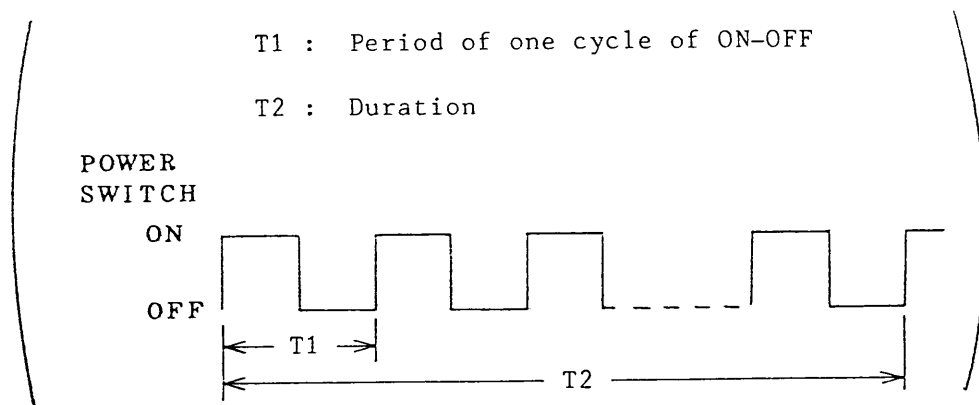
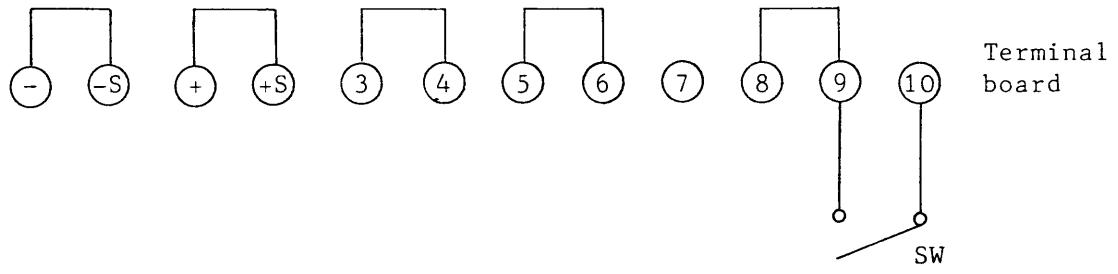


Figure 3





FOR EXAMPLE

ON-OFF control of output for PAD-L TYPE I₃

Figure 4